



CLO

NFC

RoHS COMPLIANT

FLICKER FREE

SELV

PUSH

DALI 2

## Product Features

- 25W DALI-2 DT6 Constant current LED Driver
- Inbuilt Strain relive
- Dali Dimming – 0.01% to 100%
- O/P Voltage range 6 – 54Vdc, O/P Current 250 – 700mA
- Supports CLO & Corridor function
- Compact form factor L-120 x W-42 x H-28mm

## Applications (Suitable for Indoor use only)

- Indoor Lighting (Downlights, Spotlights)
- Office Lighting (Workplace, Conference Hall)

## NFC Features

- Set O/P Current In step of 0.1mA
- Set Device Address, Set Scenes, Set Group
- Set Power on level, System failure level
- Set Fade time, Fade rate
- Dimming curve selection (Linear / Logarithmic)
- Copy All setting from once driver to another

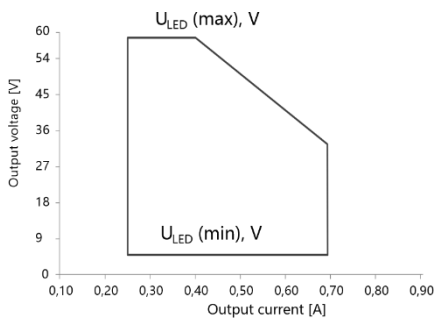
Mood / Decorative Lighting

## Electrical Specification

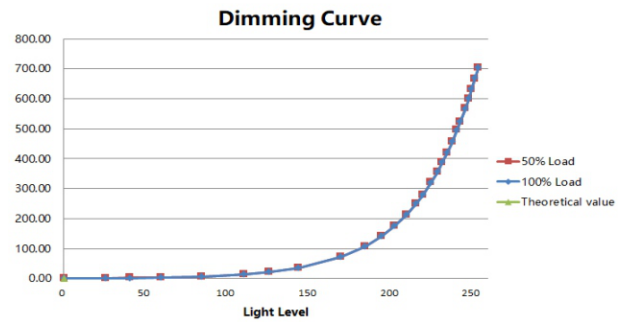
<b>Output</b>	Output Voltage range	6Vdc – 54Vdc
	Output current	250 – 700mA via NFC setting (with 0.1mA step)
	Output Power	25W Max
	No of Channels	1 Channel
<b>Input</b>	Rated Voltage (V)	220-240Vac
	Operating Voltage Range (V)	180-264Vac
	Operating Frequency (Hz)	50 / 60
	Input Current (Typical)	0.2A @ 230VAC
	System Power Consumption (Typical)	30W
	Power factor	> 0.95
	A-TDH (at Full load 230vac)	< 10%
	Stand by Power	< 0.5W
	Inbuilt Surge Protection (kV)	2.0KV
	Electrical Insulation Class	Suitable for Class II
Inrush Current (Typical)	Max. 5.64A at 230VAC; 72µs duration	
<b>Control</b>	Dimming Interface	DALI DT6 (DALI consumption < 2mA)
	Dimming Range	0.01% - 100% @ Max current
	Dimming curve	Linear/ Logarithmic optional
<b>Protections</b>	Short Circuit	Yes, Auto recovery
	Open circuit	Yes, Auto recovery
	Output Overload	Yes, Auto recovery
	Over Temperature	Yes, Auto recovery

<b>Environment</b>	Ta	-25°C ~ +45°C
	Tc	85°C (Ta="45°C")
	Humidity	10% ~ 95% RH non-condensing
	Storage Temp. & Humidity	-40°C ~ +80°C, 10% ~ 95% RH
<b>Safety &amp; EMC</b>	Safety Standards	EN61347-1, EN61347-2-13
	Withstand Voltage	I/P-O/P: 3.75KVAC
	Isolation Resistance	I/P-O/P: 100M Ohms / 500VDC / 25°C / 70% RH
	EMC Emission	EN55015, EN61000-3-2, EN61000-3-3
	EMC Immunity	EN61547, EN61000-4-2,3,4,5,6,8,11
	DALI Parts	101, 102, 207
<b>Other</b>	Life	50,000 Hours @ Tc 85°C
	Weight	0.17 Kg
	IP Rating	IP20

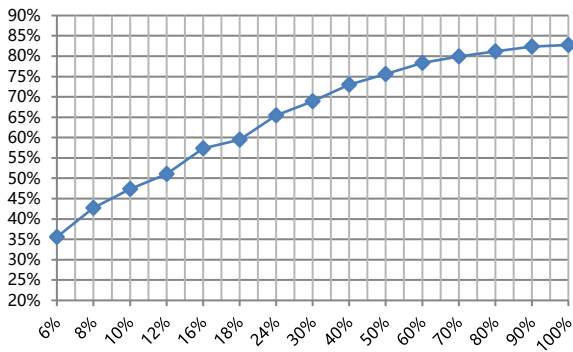
## Voltage and current operating window



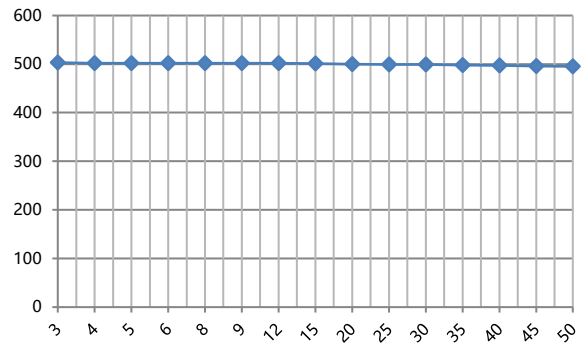
## Dimming Curve



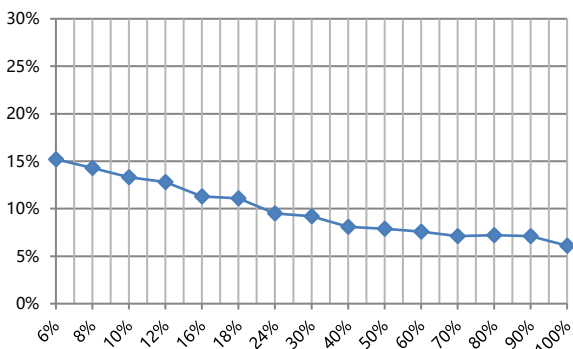
## Typical Efficiency Vs Load %



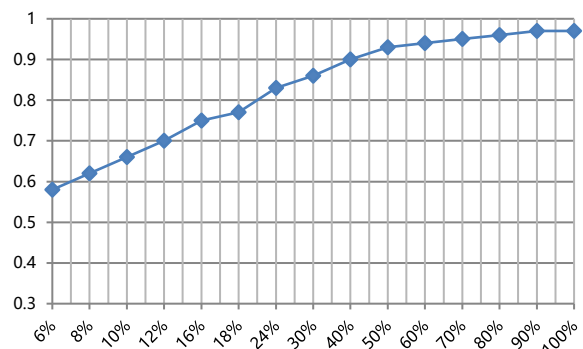
## Typical Load voltage V/S Current



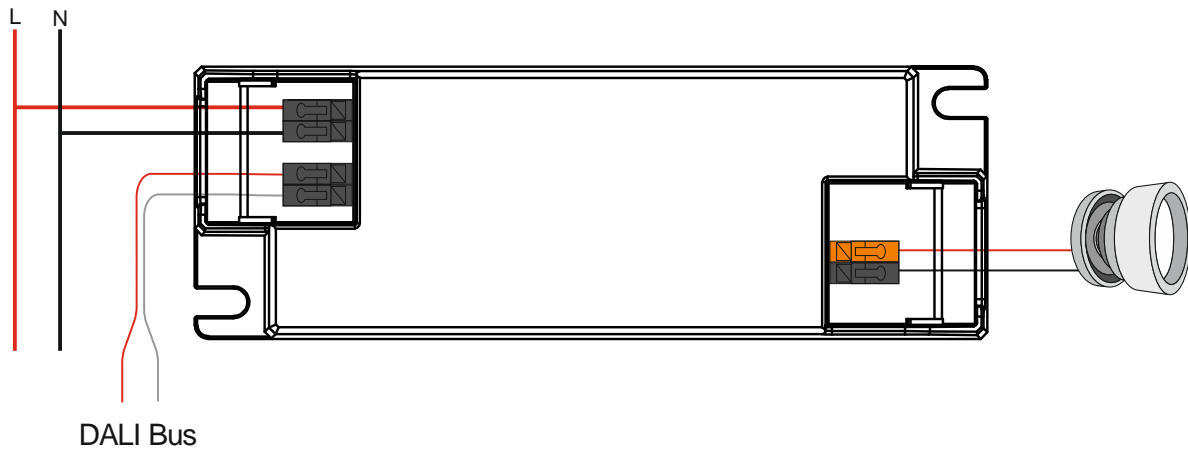
## A-THD Vs Load %



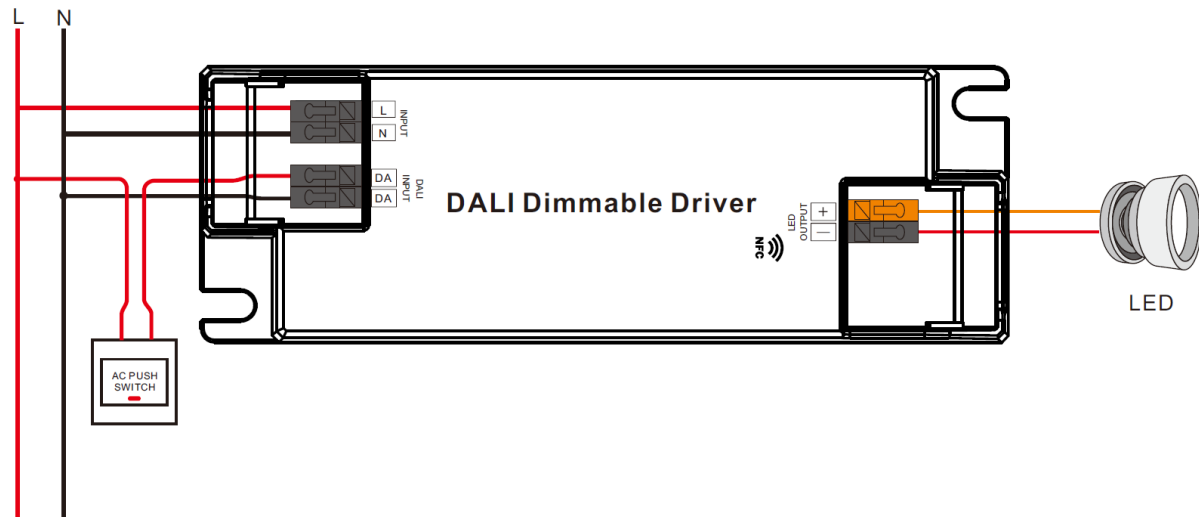
## Power factor vs Load



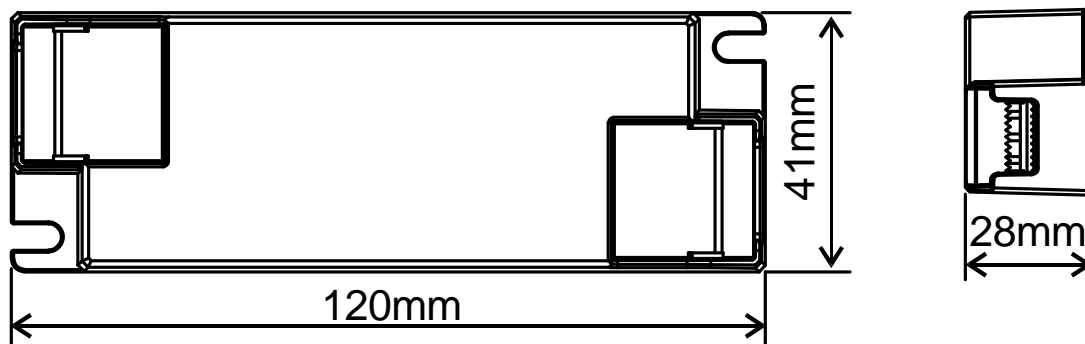
### DALI Wiring Diagram



### Wiring Diagram for Push Dim

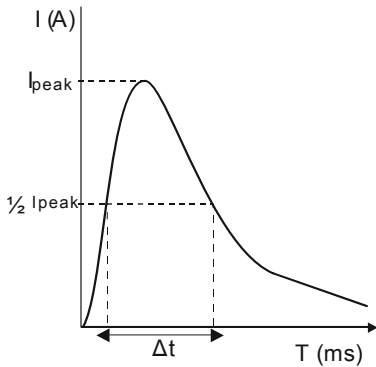


### Mechanical dimensions



### MCB Load Quantity

Module Number	I <sub>peak</sub>	Twidth	Max.quantity of LED Driver per MCB														
			B10	B13	B16	B20	B25	C10	C13	C16	C20	C25	D10	D13	D16	D20	D25
SRP-2305N-25CC250-700	5.64A	72μs	26	34	42	54	66	35	45	56	70	87	40	52	64	80	100
SRP-2309N-25CCT250-700	5.64A	72μs	26	34	42	53	66	35	45	56	70	87	40	52	64	80	100



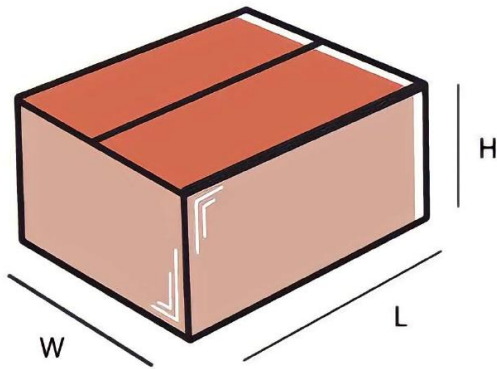
**Note:**

- Those MCB parameters are based on ABB S200 series circuit breakers.
- For different brands and models of miniature circuit breakers, the quantity of drivers will have difference.
- Please do not exceed the above-mentioned quantity during on-site installation, and the specific load quantity shall be subject to on-site installation.
- When the installation environment temperature of MCBs exceeds 30°C or when multiple MCBs are installed side by side, the number of mounted drives will be reduced, which requires recalculation.
- Type C MCB’s are strongly recommended to use with LED lighting.

### NFC Programing steps

FOR NFC PROGRAMING REFER “NFC PROGRAMING APPLICATION NOTE”

### Standard Packaging



OUTER DIMENSIONS		
L	W	H
380 mm	270 mm	280 mm
Net Weight	Gross Weight	QUANTITY
17 Kg	18 Kg	100 nos